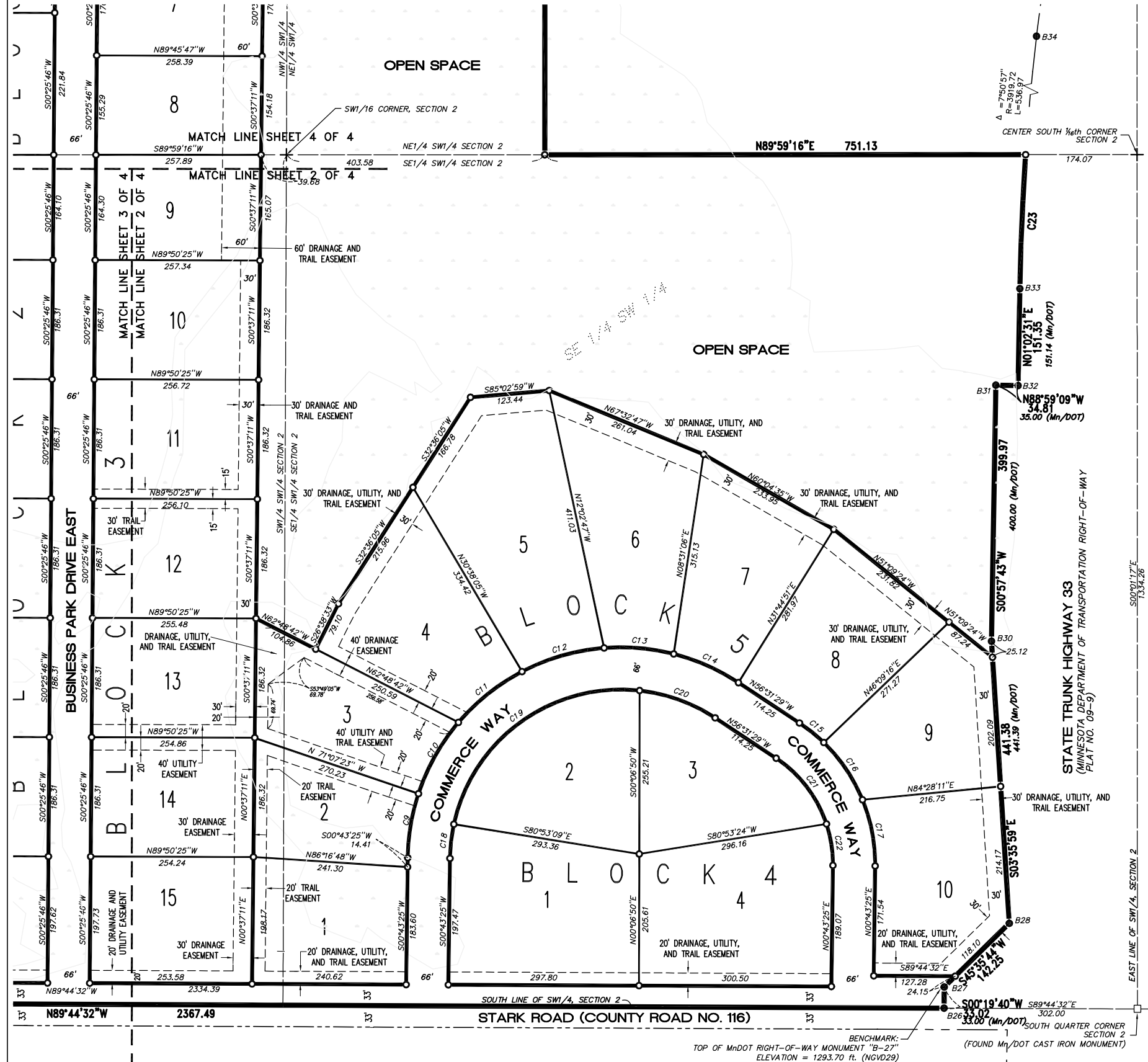


CLOQUET BUSINESS PARK

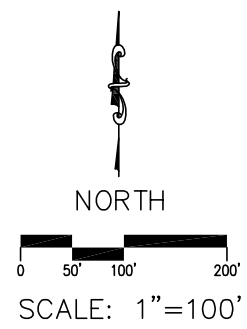
BEING A PORTION OF THE SOUTHWEST QUARTER OF SECTION 2,
TOWNSHIP 49 NORTH, RANGE 17 WEST, 4th PRINCIPAL MERIDIAN
CITY OF CLOQUET, CARLTON COUNTY, MINNESOTA

CURVE TABLE				
CURVE	RADIUS	CENTRAL ANGLE	ARC LENGTH	CHORD BEARING
C1	183.00	35°56'32"	114.81	S18°24'07"W
C2	183.00	31°46'32"	101.49	S92°15'44"W
C3	183.00	22°16'46"	71.16	S79°17'23"W
C4	117.00	90°00'00"	183.78	S45°25'46"W
C5	183.00	22°22'07"	71.44	N78°23'11"W
C6	183.00	30°00'18"	95.83	N52°11'58"W
C7	183.00	37°37'35"	120.18	N18°23'02"W
C8	117.00	90°00'00"	183.78	N44°34'14"W
C9	333.00	17°32'04"	101.91	S09°29'27"W
C10	333.00	22°06'11"	128.46	S29°18'35"W
C11	333.00	22°00'52"	127.95	S51°22'06"W
C12	333.00	23°06'52"	134.34	S73°55'58"W
C13	333.00	18°52'21"	109.69	N85°04'25"W
C14	333.00	19°06'46"	111.08	N66°04'52"W
C15	263.71	10°36'06"	48.80	N51°13'26"W
C16	263.71	23°37'23"	108.73	N34°06'42"W
C17	263.71	23°01'25"	105.97	N10°47'17"W
C18	267.00	11°31'33"	53.71	S06°29'11"W
C19	267.00	84°02'17"	391.62	S54°16'06"W
C20	267.00	27°11'17"	126.70	N70°07'07"W
C21	197.71	38°09'38"	131.68	N37°26'40"W
C22	197.71	19°05'16"	65.87	N08°49'13"W
C23	3919.72	3°03'39"	209.39	S02°28'52"W



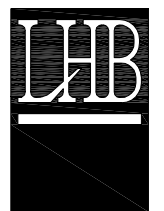
LEGEND

- DRAINAGE/UTILITY/TRAIL EASEMENT LINE
- LOT LINE
- BLOCK BOUNDARY
- PLAT BOUNDARY
- SET 5/8" X 30" REBAR WITH ALUMINUM CAP INSCRIBED "PAUL VOGEL LS 25555"
- FOUND MNDOT RIGHT-OF-WAY MONUMENT
- ROADWAY RIGHT-OF-WAY LINE
- SECTION SUBDIVISIONAL LINE
- DELINEATED WETLAND
- SHEET MATCH LINE
- PUBLIC LAND SURVEY CORNER, AS DESCRIBED
- COMPUTED POSITION, NO MONUMENT FOUND OR SET
- ADDITIONAL 17 FT. WIDE COUNTY HIGHWAY EASEMENT DESCRIBED IN DOC. NO. 252930



21 W. Superior Street
Suite 500
Duluth, MN 55802

TEL 218/727-8446
FAX 218/727-8456



<http://www.LHBcorp.com>
DULUTH MINNEAPOLIS

COPYRIGHT 2005, LHB INC. ALL RIGHTS RESERVED.
COPYING, REPRODUCTION OR DISTRIBUTION PROHIBITED
WITHOUT EXPRESS WRITTEN PERMISSION.