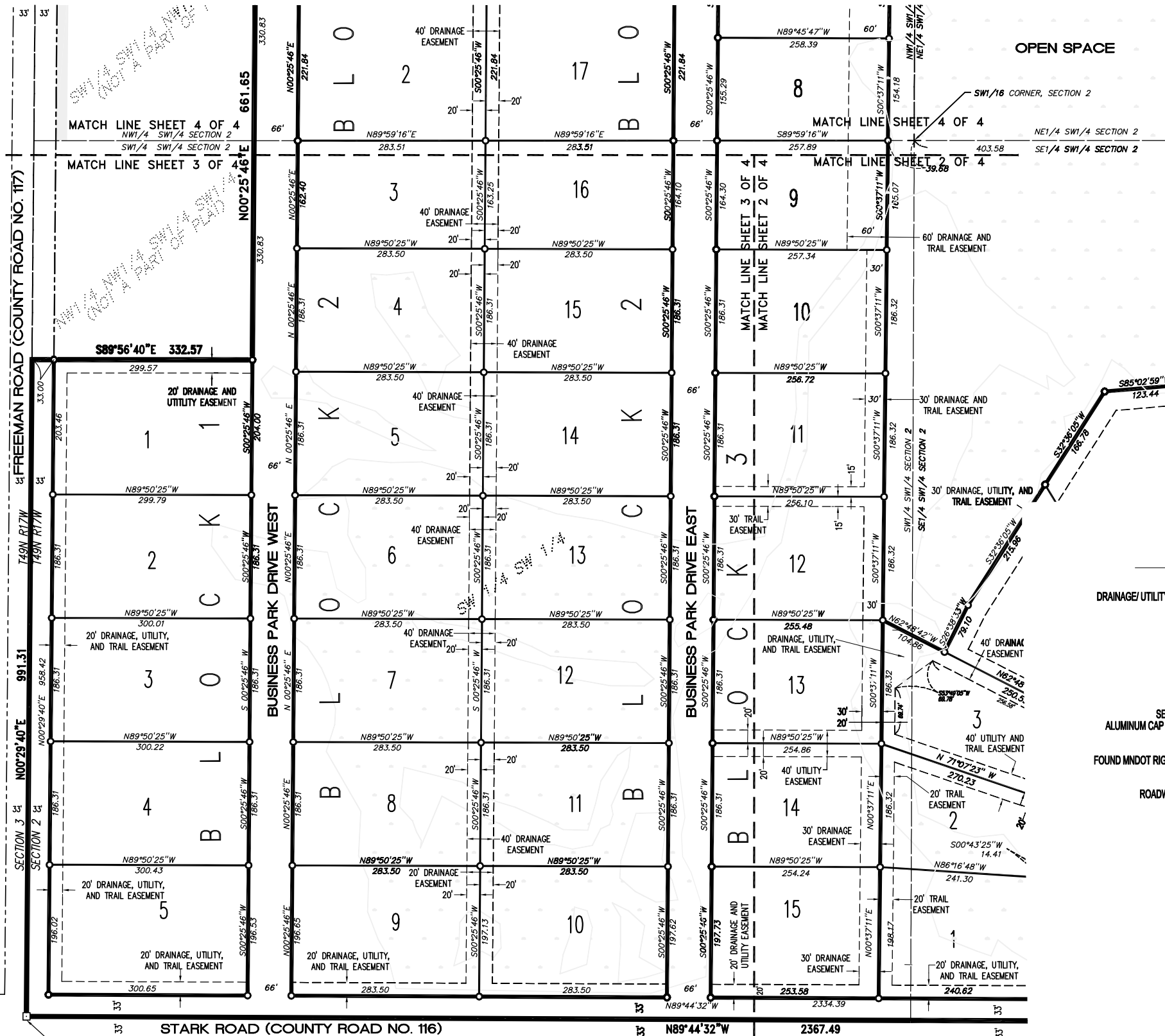


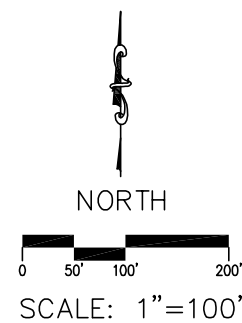
# CLOQUET BUSINESS PARK

BEING A PORTION OF THE SOUTHWEST QUARTER OF SECTION 2,  
TOWNSHIP 49 NORTH, RANGE 17 WEST, 4th PRINCIPAL MERIDIAN  
CITY OF CLOQUET, CARLTON COUNTY, MINNESOTA

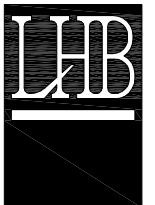


## LEGEND

DRAINAGE/UTILITY/TRAIL EASEMENT LINE	---	S89°59'22"W 159.70'	SECTION SUBDIVISIONAL LINE
LOT LINE	—	S89°50'25"E 299.72	DELINEATED WETLAND
BLOCK BOUNDARY	---	N89°34'14"W 166.50	SHEET MATCH LINE
PLAT BOUNDARY	---	S89°56'40"E 299.57	PUBLIC LAND SURVEY CORNER, AS DESCRIBED
SET 5/8" X 3/32" REBAR WITH ALUMINUM CAP INSCRIBED "PAUL VOGEL LS 25855"	○		COMPUTED POSITION, NO MONUMENT FOUND OR SET
FOUND MNDOT RIGHT-OF-WAY MONUMENT	●	B30	ADDITIONAL 17 FT. WIDE COUNTY HIGHWAY EASEMENT DESCRIBED IN DOC. NO. 252930
ROADWAY RIGHT-OF-WAY LINE	---		



21 W. Superior Street  
Suite 500  
Duluth, MN 55802



TEL 218/727-8446  
FAX 218/727-8456

<http://www.LHBcorp.com>  
DULUTH MINNEAPOLIS

COPYRIGHT 2005, LHB INC. ALL RIGHTS RESERVED.  
COPYING, REPRODUCTION OR DISTRIBUTION PROHIBITED  
WITHOUT EXPRESS WRITTEN PERMISSION.